



* All images are for illustrative purposes only.

Transparent OLED 55EW5G-A

See the unseen, LG Transparent OLED

LG Transparent OLED Signage offers new ways to communicate visually and opens up a whole new level of creativity that even conventional digital signage cannot offer.



Astonishing
Transparency



Color with
Great Depth



Product
Reliability



3M long MCX
Cables (Accessory)

A New Level of See-through View

Imagination becomes reality

LG Transparent OLED Signage illuminates spaces that once were hidden away behind the display, completely harmonizing with its surroundings.

Boasting vivid and clear colors with high transparency, this display provides visual enhancements to objects placed behind it, giving viewers an impressive "wow" factor.



SECURITY & COMPATIBILITY



* Image shown is for illustrative purpose only.

High Transparency

LG's OLED technology makes the Transparent OLED Signage have slimmer structure without backlight unit nor a liquid crystal layer, achieving high transparency of 38% much higher than conventional LCD transparent displays (10%*). While clearly showing objects behind the screen, it overlays the relevant information right before them.

* Based on LG's WFB series



* Image shown is for illustrative purpose only.

Accurate and Vivid Colors

Featuring self-lighting pixels, the display maintains vivid colors and high contrast ratio even when the display becomes transparent. It brings content to life from wide viewing angles, and the content blends into its surroundings seamlessly and naturally.

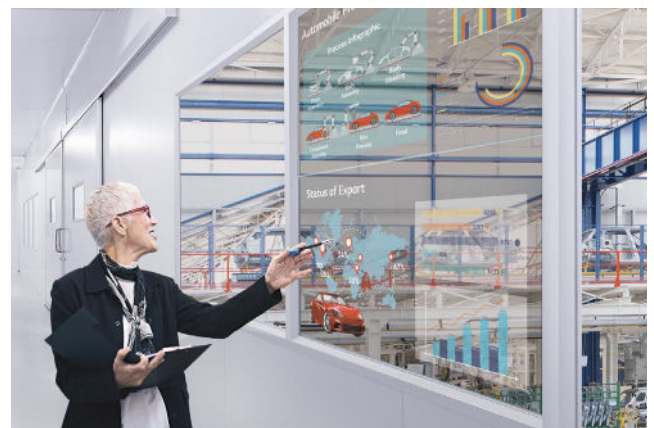


* Image shown is for illustrative purpose only.

Protective Tempered Glass

Touching a display directly can cause damage or scratches. The tempered front glass protects product from such external impacts and its anti-shatter glass is designed to minimize customers' injuries.

* Optically Clear Adhesive



* Image shown is for illustrative purpose only.

Expandable Design

LG Transparent OLED Signage is designed as a semi-assembled display, meaning you can install it in various ways to fit into existing structures and spaces. With a variety of forms of installation*, it can complement any venue in which it is installed.

* Installation accessories are not supplied by LG.

* All images are for illustrative purposes only.

PRODUCT INFORMATION

* 55 inch



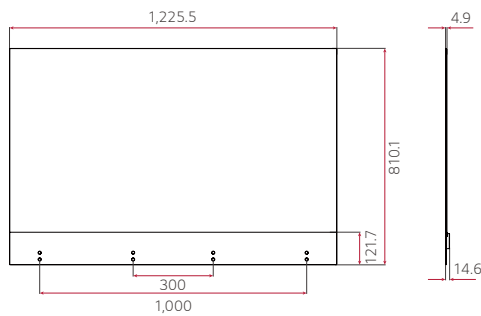
55EW5G-A

Panel	Screen Size	55"
	Panel Technology	OLED
	Native Resolution	1,920 x 1,080 (FHD)
	Brightness	150/400 nit (APL 100% / 25%, Without Glass)
	Transparency	38% (SET)
Accessory	3 M MCX / Harness Cables, etc.	

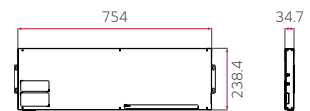
DIMENSION

(unit: mm)

55"



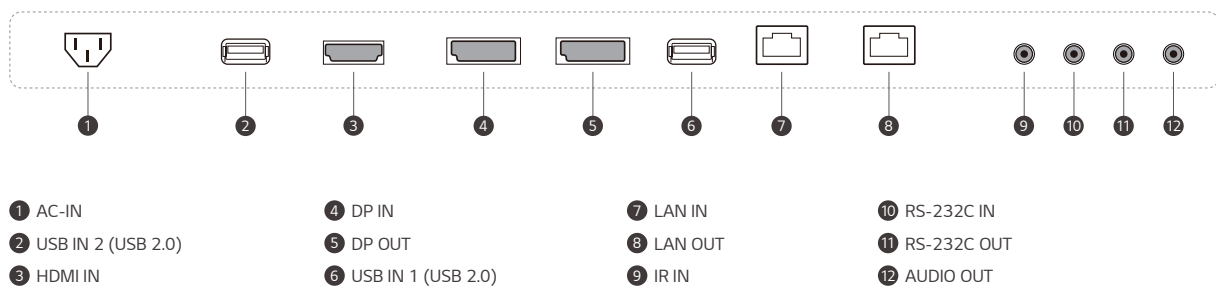
SIGNAGE BOX



CONNECTIVITY

SIGNAGE BOX

Rear



* Dimensions & Jack Panels (Rear/Side) may differ from the above image, so please contact LG sales team to verify before ordering.



Download
LG C-Display+
Mobile App
Google Play Store

www.lg.com/global/business/information-display
www.youtube.com/c/LGCommercialDisplay
www.facebook.com/LGInformationDisplay
www.linkedin.com/company/LGinformationdisplay
twitter.com/LG_ID_HQ

LG may make changes to specifications and product descriptions without notice.
 Copyright © 2020 LG Electronics Inc. All rights reserved.
 "LG Life's Good" is a registered trademark of LG Corp.
 The names of products and brands mentioned here may be the trademarks of their respective owners.

